

MORPHOLOGICAL AND GENETIC VARIATION IN THREE POPULATIONS OF *Hoplobatrachus tigerinus* FROM BANGLADESH

M. Hasan, M. M. R. Khan and M. Sumida¹

Department of Fisheries Biology and Genetics, Bangladesh Agricultural University
Mymensingh-2202, Bangladesh

ABSTRACT

In order to investigate the morphological and genetic variation of Indian bullfrog *Hoplobatrachus tigerinus*, live samples were collected from three populations located in Khulna (southern part), Char Nilokhia and Netrokona (central part) in Bangladesh. The proportions of head length and head width (HL : HW), eye length and tympanum diameter (EL:TD), head length and snout length (HL : SL), internarial space and interorbital distance (IN:IOD) and internarial space and distance from nostril to tip of snout (IN:NS) of the Khulna population were significantly higher ($p < 0.05$) than those of the other two populations. For allozyme study, 4 enzymes were screened, where 5 presumptive scorable loci were identified. The highest values of mean proportion of polymorphic loci (< 0.95), mean number of alleles per locus and mean number of heterozygous loci per individual were observed in the Khulna population (60%, 1.60 and 14.0% respectively). The pairwise genetic differentiation (F_{ST} and Nei's D) was the highest (0.279 and 0.157, respectively) between the Khulna and Netrokona populations. The UPGMA dendrogram showed two clusters i.e. the Char Nilokhia and Netrokona populations formed one cluster, whereas the Khulna population alone made another cluster. These results suggested that the Khulna population diverged morphologically and genetically from the other two populations probably due to its geographical distance. Further extensive study will be necessary for elucidating the whole aspects of differentiation in *H. tigerinus* from Bangladesh.

Key words : Morphology, Allozyme analysis, Geographical distance, *H. tigerinus*

INTRODUCTION

Bangladesh is enriched with aquatic biodiversity (DoF, 2007), and contains a number of diverse ecosystems supporting roughly 113 species of mammals, 628 species of birds, 126 species of reptiles, 22 species of amphibians, 708 species of freshwater and marine fish, about 400 species of mollusks, and 140 species of bees and wasps, but many of them are on the nation's list of threatened animals (Reza, 2007). Among these amphibian species, *Hoplobatrachus tigerinus* (previously called it *Rana tigerina*) was an important group, and it is available in many Asian countries such as India, Pakistan, Nepal, Bhutan, Myanmar,

¹ Institute of Amphibian Biology, Graduate School of Science, Hiroshima University, Japan

Thailand, Malaysia and Indonesia (Frost, 2007). Once *H. tigerinus* species was available in the diversified water bodies of Bangladesh. Its leg is an important delicious food item to many people especially tribal people in Europe and Asia. Some people of Bangladesh used to catch and export frog legs to abroad, but indiscriminate harvesting of frogs had brought a bad impact on the natural ecosystem which pursued the government of Bangladesh to impose a ban on this frog collection, harvesting and processing. It plays an important role in controlling ecosystem, so, it is important to protect the species. Thus, morphological and genetic variation of different natural stocks of the population must be studied. In India, the adverse impact of uncontrolled harvesting of frogs, specifically *H. tigerinus*, from rice-fields and wet-lands, where they protect crops by devouring damaging insects, led to a ban on collecting frogs during the breeding season (Husain and Rahman, 1978).

Research work on frogs of Bangladesh has started in last decade (Islam, 2000 ; Khan *et al.*, 2002; Islam *et al.*, 2008a, b; Alam *et al.*, 2008). The culture, breeding and genetics of frogs have been observed in many frog species. Using allozyme technique, many studies on anuran distributed in Japan and adjacent countries have been reported by Nishioka and her collaborators. The genetic differences in *R. limnocharis* (= *F. limnocharis*) (Nishioka and Sumida, 1990), *Hyla japonica* (Nishioka *et al.*, 1990), *R. japonica* (Sumida and Nishioka, 1994), *R. nigromaculata* and *R. brevipoda* (Nishioka *et al.*, 1992), and *R. rugosa* (Nishioka *et al.*, 1993) have been reported by allozyme techniques. The purpose of this study was to identify the morphological and genetic variation of this particular amphibian species (*H. tigerinus*) in three regions viz. Khulna (southern part), Char Nilokhia and Netrokona (central part) of Bangladesh by allozyme analysis.

MATERIALS AND METHODS

Live frogs of *H. tigerinus* were collected from three different geographical localities, i.e. Khulna, Char Nilokhia and Netrokona during the months of March to May, 2007. A total of 10 specimens were collected from each locality. The distance between Khulna and Char Nilokhia was 200 km, whereas Netrokona and Char Nilokhia was only 30 km. The muscle and liver samples were taken from each individual and stored at -21°C until use. Details of the sampling localities, number of specimen and date of collection are given in Table 1.

Table 1. Collecting locality, sample size and date of collection of three populations of *H. tigerinus*

Population No.	Locality	No. of individual	Date of collection
1	Khulna	10	March 13, 2007
2	Char Nilokhia	10	April 14, 2007
3	Netrokona	10	May 12, 2007

The morphometric data were recorded using normal centimeter scale, divider and forceps, recorded to the nearest centimeter. The morphometric characters viz., snout-vent length (SVL), hind limb length (HLL), head length (HL), head width (HW), thigh length (THIGHL), tibia length (TL), internarial space (IN), inter orbital distance (IOD), eye length (EL), tympanum diameter (TD), snout length (SL), distance from nostril to tip of snout (NS), distance from back of mandible to back of eye (MFE), distance from back of mandible to front of eye (MBE), snout tympanum length (STL), mouth angle snout length (MSL), nostril tympanum length (NTL), distance from front of eyes to nostril (EN), tympanum eye length (TEL), distance from back of mandible to nostril (MN), maximum width of upper eyelid (UEW), hand length (HAL), forelimb length (FLL), lower arm length (LAL), foot length (FOL), length of tarsus and foot (TFOL), third finger length (3FL), first finger length (1FL), fourth toe length (4TL), inner metatarsal tubercle length (IMTL) and inner toe length (ITL). The thirty-one morphometric characters were measured following the conventional methods described by Hubbs and Lagler (1958) with the help of a slide caliper.

In this experiment, horizontal starch gel electrophoresis was done following the methods by Shaw and Prasad (1970). Electrophoresis was conducted using amine-citrate buffer (C.A. 6) (Clayton and Tretaik, 1972). After electrophoresis, the gel slices (about 1 mm thickness) were histochemically stained for different enzymes as described in Aebersold *et al.* (1987). Non-parametric statistical analyses were used in all the comparisons (Zar, 1996). Differences in morphometric characters among populations were analyzed using the Kruskal-Wallis non-parametric analysis of variance (ANOVA). For instances, where significant differences between populations were detected, a non-parametric post hoc test (Zar, 1996) was conducted. Allelic frequencies were calculated directly from observed genotypes. The distribution of observed genotypes was calculated from the Hardy-Weinberg equilibrium using a chi-square (χ^2) test for allozyme system. When the most common allele existed in a frequency of less than 0.95 at a given locus, it was regarded as polymorphic. The mean proportion of heterozygous loci per individual, mean proportion of polymorphic loci per population, and average number of alleles per locus were calculated so as to show the extent of genetic variability for each population (Lewontin, 1974). Expected heterozygosity (H_e) and observed heterozygosity (H_o) were examined according to Nei and Roychoudhury (1973). Genetic distance (D) value was calculated using Nei's formula (Nei, 1972).

RESULTS

Thirty one morphometric characters recorded from the samples of three populations of *H. tigerinus* are shown in Table 2. Average values of morphometric characters showed slight variation among three populations. Different proportions of morphometric characteristics (SVL : HLL, HL : HW, THIGH : TL, IN : IOD, EL : TD, HL : SL, IN : NS and MFE : MBE) of *H. tigerinus* are given in Table 3. The proportions of seven morphometric characters (HL : HW, THIGH : TL, IN : IOD, EL : TD, HL : SL, IN : NS and MFE : MBE) of all populations of *H. tigerinus* were significantly different ($p < 0.05$) from each other. The proportion of head length-head width (HL : HW), eye length-tympanum diameter (EL :

TD), head length-snout length (HL : SL), internarial space-interorbital distance (IN : IOD) and internarial space-distance from nostril to tip of snout (IN : NS) of the Khulna population was significantly higher ($p < 0.05$) than those of the rest two populations. Thigh length-tibia length (THIGH : TL) of the Char Nilokhia population was higher than those of the other populations.

Table 2. Mean measurement values of thirty-one morphometric characters in three populations of *H. tigerinus*. $n=10$ for each population.

Morphometric character	Khulna (Mean \pm SD)	Char Nilokhia (Mean \pm SD)	Netrokona (Mean \pm SD)
SVL	10.59 \pm 1.47	12.33 \pm 0.79	11.55 \pm 1.35
HL	4.68 \pm 1.82	4.44 \pm 0.26	4.26 \pm 0.29
HW	4.14 \pm 0.48	4.24 \pm 0.58	4.53 \pm 0.32
STL	2.81 \pm 0.14	3.26 \pm 0.21	3.00 \pm 0.00
MSL	4.22 \pm 1.95	3.76 \pm 0.79	3.68 \pm 0.11
NS	0.52 \pm 0.11	0.72 \pm 0.05	0.67 \pm 0.05
SL	1.61 \pm 0.36	1.94 \pm 0.12	1.72 \pm 0.09
NTL	1.75 \pm 1.05	2.94 \pm 0.25	2.73 \pm 0.52
EN	0.96 \pm 0.06	1.15 \pm 0.16	1.01 \pm 0.04
TEL	0.51 \pm 0.05	0.52 \pm 0.08	0.50 \pm 0.00
MN	2.92 \pm 1.06	3.65 \pm 0.29	3.81 \pm 0.33
MFE	2.67 \pm 0.26	2.95 \pm 0.15	2.96 \pm 0.08
MBE	2.21 \pm 0.22	2.08 \pm 0.19	2.05 \pm 0.08
IN	0.59 \pm 0.05	0.52 \pm 0.13	0.68 \pm 0.04
EL	0.99 \pm 0.03	1.02 \pm 0.07	1.01 \pm 0.04
IOD	0.63 \pm 0.15	0.66 \pm 0.14	1.05 \pm 0.08
UEW	0.48 \pm 0.31	0.67 \pm 0.04	0.52 \pm 0.04
HAL	2.03 \pm 0.09	2.95 \pm 0.94	2.18 \pm 0.17
FLL	2.05 \pm 0.15	2.59 \pm 0.29	2.05 \pm 0.15
LAL	2.42 \pm 0.16	2.67 \pm 0.24	2.28 \pm 0.12
HLL	15.52 \pm 2.80	18.41 \pm 0.83	17.26 \pm 1.43
THIGH	4.28 \pm 0.78	5.22 \pm 0.28	4.38 \pm 0.44
TL	5.23 \pm 0.61	6.06 \pm 0.36	5.46 \pm 0.44
TFOL	7.21 \pm 0.46	8.03 \pm 0.06	8.16 \pm 0.51
3FL	1.10 \pm 0.20	1.48 \pm 0.12	1.35 \pm 0.22
1FL	0.61 \pm 0.16	1.00 \pm 0.04	0.90 \pm 0.22
4TL	3.13 \pm 1.05	4.06 \pm 0.67	4.00 \pm 0.17
IMTL	0.50 \pm 0.00	0.49 \pm 0.02	0.50 \pm 0.06
FOL	00	00	00

Table 3. Morphometric proportions in three populations of *H. tigerinus*. Values of the parameter in each column with different superscripts (a, b & c) differed significantly ($p < 0.05$)

Population	SVL:HLL	HL:HW	THIGH:TL	IN:IOD	EL:TD	HL:SL	IN:NS	MFE:MBE
Char Nilokhia	0.670±0.01 ^a	1.047±0.01 ^b	0.861±0.01 ^a	0.788±0.01 ^b	1.109±0.01 ^c	2.289±0.01 ^c	0.722±0.01 ^c	1.418±0.01 ^b
Netrokona	0.669±0.01 ^a	0.940±0.01 ^c	0.802±0.01 ^b	0.648±0.00 ^c	1.247±0.01 ^b	2.480±0.01 ^b	1.010±0.01 ^b	1.444±0.01 ^a
Khulna	0.682±0.01 ^a	1.130±0.01 ^a	0.818±0.01 ^b	0.937±0.00 ^a	1.800±0.01 ^a	2.900±0.01 ^a	1.130±0.01 ^a	1.208±0.01 ^c

The enzyme analyzed, E.C. number, abbreviation of enzyme and the buffer system used for horizontal starch-gel electrophoresis are shown in Table 4. Allele frequencies were calculated directly from genotypes at 5 loci for each population. Among the five loci observed, three loci (*Gpi-2*, *Mdh-1*, and *Pgm*) were polymorphic, and the *Ldh-1* and *Ldh-2* loci were invariant. The *Gpi-2*, *Mdh-1* and *Pgm* loci showed allelic frequencies of $a = 0.250$ and $b = 0.750$, $a = 0.900$ and $b = 0.100$, and $a = 0.850$ and $b = 0.150$ for the Khulna population, $a = 0.700$ and $b = 0.300$, $a = 1.000$, $a = 0.800$ and $b = 0.200$ for the Char Nilokhin population, and $a = 1.000$, $a = 0.800$ and $b = 0.200$, and $a = 0.650$ and $b = 0.350$ for the Netrokona population, respectively (Table 5, Figs. 1 and 2). The chi-square test was done in all the cases of polymorphic loci between observed genotypes and expected genotypes, based on Hardy-Weinberg equilibrium. In case of three populations of *H. tigerinus*, the *Gpi-2* locus was shown to be significant ($p < 0.01$) in fitness test of Hardy-Weinberg equilibrium. The observed number of alleles ($N_a = 1.60$), the proportion of heterozygous loci per population (14.0%) and the proportion of polymorphic loci per population (60.0%) were higher in the Khulna population than those of the other two populations (Table 6). The fixation index (F_{ST}) and gene flow (N_m) are given in Table 7. The fixation index (F_{ST}) and the gene flow (N_m) overall three populations are 0.219 and 0.889, respectively. In the pair-wise analysis, the highest F_{ST} value and the lowest N_m value were estimated to be 0.279 and 0.647, respectively, between the Khulna and Netrokona populations (Table 7).

Table 4. Enzyme and buffer system used for allozyme analysis

Enzyme (Abbreviation)	Locus	Enzyme pattern	E.C. Number	Buffer system*
Glucose-6-phosphate isomerase (GPI)	<i>Gpi-2</i>	Dimer	5.3.1.9	C.A. 6
Lactate dehydrogenase (LDH)	<i>Ldh-1</i>	Tetramer	1.1.1.27	C.A. 6
	<i>Ldh-2</i>			
Malate dehydrogenase (MDH)	<i>Mdh-1</i>	Dimer	1.1.1.37	C.A. 6
Phosphoglucomutase (PGM)	<i>Pgm</i>	Monomer	5.4.2.2	C.A. 6

* C.A. 6 represents the amine-citrate pH 6 buffer

Table 5. Allele frequency at five presumptive loci of three *H. tigerinus* populations

Locus	Allele	Allele frequency		
		Khulna	Char Nilokhia	Netrokona
<i>Gpi-2</i>	<i>a</i>	0.250	0.700	1.000
	<i>b</i>	0.750	0.300	-
<i>P</i>		0.009*	0.001*	-
<i>Ldh-1</i>	<i>a</i>	1.000	1.000	1.000
<i>Ldh-2</i>	<i>a</i>	1.000	1.000	1.000
<i>Mdh-1</i>	<i>a</i>	0.900	1.000	0.800
	<i>b</i>	0.100	-	0.200
<i>P</i>		0.808^{NS}	-	0.146^{NS}
<i>Pgm</i>	<i>a</i>	0.850	0.800	0.650
	<i>b</i>	0.150	0.200	0.350
<i>P</i>		0.655^{NS}	0.500^{NS}	0.880^{NS}

p : Probability of Chi-square value. * Significant level : $p \leq 0.01$. ^{NS} Non-significant $p \leq 0.1$

Table 6. Genetic variabilities at 5 loci of three *H. tigerinus* populations

Population	Mean proportion of polymorphic loci * (%)	Mean number of alleles per locus (N_a)	Mean proportion of heterozygous loci per individual (%)	Heterozygosity		
				H_o	H_e	H_o/H_e
Khulna	60.0	1.60	14.0	0.12	0.17	0.71
Netrokona	40.0	1.40	12.0	0.08	0.16	0.52
Char Nilokhia	40.0	1.40	14.0	0.140	0.16	0.88
Average	46.7	1.47	13.3	0.11	0.16	0.67

* $p \leq 0.95$

Table 7. Fixation index (F_{ST}) and gene flow (N_m) in three *H. tigerinus* populations

Pairwise	F_{ST}	N_m^*
Khulna-Char Nilokhia	0.122	1.802
Char Nilokhia-Netrokona	0.092	2.484
Khulna-Netrokona	0.279	0.647
Overall	0.219	0.890

* N_m = Gene flow estimated from $F_{ST} = 0.25 (1 - F_{ST}) / F_{ST}$

Table 8. Nei's (1972) original measures of genetic identity (above diagonal) and genetic distance (below diagonal) estimated among three *H. tigerinus* populations based on 5 loci

Population	Khulna	Char Nilokhia	Netrokona
Khulna	—	0.94	0.854
Char Nilokhia	0.052	—	0.964
Netrokona	0.157	0.036	—

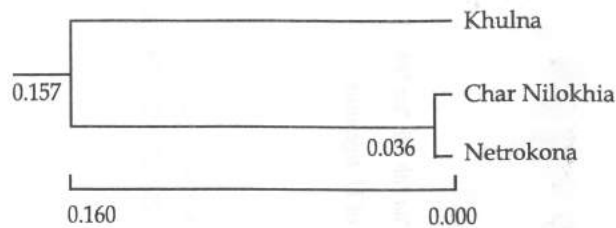


Fig. 3. Nei's (1972) UPGMA dendrogram showing the genetic distance (D) among three populations of *H. tigerinus*

The genetic distance (D) (Nei, 1972) varied from 0.036 to 0.157 among three populations. The minimum value (0.036) was observed between the Char Nilokhia and Netrokona populations, whereas the highest value (0.157) was observed between the Khulna and Netrokona populations (Table 8, Fig. 3).

DISCUSSION

Mean snout-vent length of the species recorded as 12.33 cm in the Char Nilokhia population, 11.55 ± 1.35 cm in the Netrokona population, and 10.59 ± 1.47 cm in the Khulna population may be explained as the environmental effects. These may be due to the influence of photoperiod, day-length and feeding schedule on tadpole growth and development (Wright *et al.*, 1988). The longest head length was in the Khulna population with the value of 4.68 ± 1.82 cm, whereas the shortest was 4.26 ± 0.29 cm in the Netrokona population. Notwithstanding, these deviations were found due to the anthropological and other genetic factors affected on their growth, which was supported by Hirata *et al.* (1991). Bruneau and Magnin (1980) observed that *Rana catesbeiana* might attain a length of 10.50 cm and its growth depends on the temperature, availability of food and fecundity.

Among five presumptive loci, only three loci (*Gpi-2*, *Mdh-1* and *Pgm*) were found to be polymorphic in all populations. The polymorphic loci for all populations had two alleles (*a* and *b*). Nishioka *et al.* (1993) found that the mean proportion of polymorphic loci in 40 populations of *R. rugosa* was 31.1%, which was much lower than the value (46.7%) obtained in the present study. The *H. tigerinus* populations clearly showed a higher level of polymorphism than the above-mentioned *R. rugosa* populations. The mean number of alleles per locus ranged from 1.40 to 1.60 (average 1.47), which was a little bit higher than the value (1.42) obtained by Nishioka *et al.* (1993) in *R. rugosa*. In contrast, this value (1.47) was lower than that (2.00) obtained by Nishioka *et al.* (1987) in three genera *Buergeria*, *Rhacophorus* and *Polypedates*, and by Khan *et al.* (2002) in *H. tigerinus*. These variations might be due to different sampling size and the difference in the number of loci observed. The mean proportion of heterozygous loci per individual ranged from 12.0% to 14.0% (average 13.3%), which was similar to those obtained by Sumida and Nishikoka (1996). The mean proportion of polymorphic loci of *R. ornativentris* and *R.*

rugosa were 14.4% and 11.3%, respectively. The observed heterozygosity (H_o) ranged from 0.08 to 0.14 (average 0.11) was higher than that (0.10) reported by Raginski and Babik (2000) in *R. arvalis*. The expected heterozygosity (H_e) was found to be 0.16 in the present study, which was similar to those obtained by Rafiniski and Babik (2000) and Khan et al. (2002). However, the present value was much higher than that obtained by Formas and Brevia (2000). The level of heterozygosity was related with the size of populations within a species, although higher heterozygosity (H_o) value is necessary for breeding program. The highest observed and expected heterozygosities ($H_o = 0.14$ and $H_e = 0.17$) were observed in the Char Nilokhia population and the Khulna population, respectively.

The co-efficient of gene differentiation (F_{ST}) in all three *H. tigerinus* populations were examined (Nei, 1972) and F_{ST} was found to be 0.219, which indicated that the population contained slight genetic differentiation, and that the number of migrated individuals from one population to another was high ($N_m = 0.890$). The overall F_{ST} value (0.219) obtained in *H. tigerinus* populations was lower than that (0.306) obtained in *R. ornativentris* populations (Sumida and Nishioka, 1996). The observed genetic distance between the Khulna population and the other populations might be due to the geographical distances. Based on Nei's (1972) genetic distance (D -value), the UPGMA dendrogram showed that the three populations could be grouped into two clusters as shown in the dendrogram (Fig. 3). First cluster contained the Khulna population alone, and separated from second one by $D = 0.157$, whereas the second cluster comprised of the Char Nilokhia and Netrokona populations. In the second cluster, the Char Nilokhia population differentiated from the Netrokona population by $D = 0.036$. Islam et al. (2008a, b) reported that the mean genetic distance between the medium and small types of the *Fejervarya limnocharis* complex was 0.782, and suggested that these two types are distinct species. The genetic distance (0.157) observed between two clusters (the Khulna population and the Char Nilokhia and Netrokona populations) was smaller than that between two types of the *Fejervarya limnocharis* complex mentioned above. Among the *Dicroglossus* species from the Mediterranean area, genetic distances were reported to be 0.17 - 1.04 (Zangari et al., 2006). These differentiations might be due to different species or geographical variations. The genetic distance (D) ranged from 0.036 to 0.157 among the three populations of *H. tigerinus*. The minimum genetic distance (0.036) was observed between the Char Nilokhia and Netrokona populations, while the maximum value (0.157) was found between the Khulna and Netrokona populations (Table 8). Nei (1972) stated that values of D for inter-species comparison, sub-species and local races are 1.0, 0.1 and 0.01, respectively, while Ayala (1975) proposed that the D value for sub-species is 0.20. The present findings assumed that *H. tigerinus* populations might be under local races. Extensive genetic divergence might establish reproductive isolation that reflects further accumulation of genetic differentiation at many loci over a long period of time (Ferguson, 2002; Sites and Marshall, 2003, 2004). However, further extensive research works on genetic variability of the frog populations of many localities will be necessary for elucidating the whole aspects of differentiation of *H. tigerinus* in Bangladesh using different molecular markers i.e. RFLP (Restriction Fragment Length Polymorphism), RAPD (Random Amplified Polymorphic DNA), microsatellite DNA markers etc.

REFERENCES

- Aebersold, P. B., Winans, G. A., Teel, D. J., Milner, G. B. and Utter, F. M. 1987. Manual for starch gel electrophoresis: a method for the detection of genetic variation. NOAA Technical Report NMFS, 61: 1-19.
- Alam, M. S., Igawa, T., Khan, M. M. R., Islam, M. M., Kuramoto, M., Matsui, M., Kurabayashi, A. and Sumida, M. 2008. Genetic divergence and evolutionary relationships in six species of genera *Hoplobatrachus* and *Euphlyctis* (Amphibia: Anura) from Bangladesh and other Asian countries revealed by mitochondrial gene sequences. *Mol. Phylogenet. Evol.*, 48: 515-527.
- Ayala, F. J. 1975. Genetic differentiation during the speciation process. *Evol. Biol.*, 8: 1-78.
- Bruneau, M. and Magnin, E. 1980. Larval development in *Rana catesbeiana* Shaw (Amphibia: Anura) of the Laurentian region of Quebec. *Can. J. Zool.*, 58(2): 169-174.
- Clayton, J. W. and Tretiak, D. N. 1972. Amine-citrate buffers for pH control in starch gel electrophoresis. *Can. J. Fish. Aquat. Sci.*, 29: 1169-1172.
- DoF, 2007. Saranica, Matshya Pakhya Sankalan-2007. Ministry of Fisheries and Livestock. The Government of Peoples Republic in Bangladesh, Dhaka. 130 pp.
- Ferguson, J. W. H. 2002. On the use of genetic divergence for identifying species. *Bio. J. Linn. Soc.*, 75: 509-516.
- Formas, J. R. and Brevia, L. M. 2000. Population genetics of the Chilean frog *Batrachyla leptopus* (leptodactylidae). *Genet. Mol. Biol.*, 23(1): 232-243.
- Frost, D. R. 2007. Amphibian Species of the World: an Online Reference. Version 5.0 (25 October, 2007). American Museum of Natural History, New York, Electronic Database accessible at <http://research.amnh.org/herpetology/amphibia/index.php>.
- Hirata, J. S. Nishikawa and Sasaki, F. 1991. Morphological and biochemical changes of anuran notochord during the development of *Rana japonica*. *Zool. Sci.*, 8(6): 1076.
- Hubbs, C. L. and Lagler, K. L. 1958. Fishes of the great lake region, 2nd ed. Cranbrook Institute of Scientific Bulletin, 26: 1-213.
- Husain, K. Z. and Rahman, M. M. 1978. The amphibian fauna of Bangladesh. *Bangladesh J. Zool.*, 6(2): 157-158.
- Islam, M. A. 2000. Intensive culture of bull frog *Hoplobatrachus tigrina*. Final report of Bangladesh Agricultural University Research System. 1-37 pp.
- Islam, M. M., Khan, M. M. R., Djong, T. H., Alam M. S. and Sumida, M. 2008a. Genetic differentiation of the *Fejervarya limnocharis* complex from Bangladesh and other Asian countries Elucidated by allozyme analyses. *Zool. Sci.*, 25: 261-272 .
- Islam, M. M., Kurose, N., Khan, M. M. R., Nishizawa, T., Kuramoto, M., Alam, M. S., Hasan, M., Kurniawan, N., Nishioka, M. and Sumida, M. 2008b. Genetic divergence and reproductive isolation in the genus *Fejervarya* (Amphibia: Anura) from Bangladesh inferred from morphological observations, crossing experiments, and molecular analyses. *Zool. Sci.*, 25: 1084-1105.
- Khan, M. M. R., Alam, M. S., Sarder, M. R. I., Bhuiyan, M. M. H. and Sumida, M. 2002. Study on genetic variation of frogs in Bangladesh using allozyme marker. *Bangladesh J. Fish.*, 25(1-2): 35-46.
- Lewontin, R. C. 1974. The Genetic Basis of Evolutionary Change. Columbia University Press, New York.
- Nei, M. 1972. Genetic distance between populations. *Am. Nat.*, 106: 283-292.

- Nei, M. and Roychoudhury, A. K. 1973. Probability of fixation and mean fixation time of an over dominant mutation. *Genetics*, 74: 371-380.
- Nishioka, M. and Sumida, M. 1990. Differentiation of *Rana limnocharis* and two allied species elucidated by electrophoretic analyses. *Sci. Rep. Lab. Amphibian Biol., Hiroshima Univ.*, 10: 125-154.
- Nishioka, M., Kodama, Y., Sumida, M. and Ryuzaki, M. 1993. Systematic evolution of 40 populations of *Rana rugosa* distributed in Japan elucidated by electrophoresis. *Sci. Rep. Lab. Amphibian Biol., Hiroshima Univ.*, 12: 83-131.
- Nishioka, M., Sumida, M. and Borkin, L. J. 1990. Biochemical differentiation of the genus *Hyla* distributed in the Far East. *Sci. Rep. Lab. Amphibian Biol., Hiroshima Univ.*, 10: 93-124.
- Nishioka, M., Sumida, M. and Ohtani, H. 1992. Differentiation of 70 populations in the *Rana nigromaculata* group by the method of electrophoretic analyses. *Sci. Rep. Lab. Amphibian Biol., Hiroshima Univ.*, 11: 1-70.
- Nishioka, M., Sumida, M., Ohta, S. and Suzuki, H. 1987. Speciation of three allied genera, *Buergeria*, *Rhacophorus* and *Polypedates*, elucidated by the method of electrophoretic analysis. *Sci. Rep. Lab. Amphibian Biol., Hiroshima Univ.*, 9: 53-96.
- Raginski, J. and Babik, W. 2000. Genetic differentiation among Northern and Southern populations of the moor frog *Rana arvalis* Nilsson in central Europe. *Heredity.*, 84(5): 610-618.
- Reza, A. H. M. A. 2007. Destination Bangladesh: From the Himalayas to the Bay of Bengal. *Travelogue Iguana.*, 14(2): 107-115.
- Shaw, C. R. and Prasad, R. 1970. Starch gel electrophoresis of enzymes-a compilation of recipes. *Biochem. Genet.*, 4: 297-330.
- Sites, J. W. and Marshall, J. C. 2003. Delimitation species: a renaissance issue in systemic biology. *Trends Ecol. Evol.*, 18: 462-470.
- Sites, J. W. and Marshall, J. C. 2004. Operational criteria for delimiting species. *Annu. Rev. Ecol. Evol. Syst.*, 35: 199-227.
- Sumida, M. and Nishioka, M. 1994. Genetic differentiation of the Japanese brown frog, *Rana japonica*, elucidated by electrophoretic analysis of enzymes and blood proteins. *Sci. Rep. Lab. Amphibian Biol., Hiroshima Univ.*, 13: 137-171.
- Sumida, M. and Nishioka, M. 1996. Genetic variation and population divergence in the mountain brown frog, *Rana ornativentris*. *Zool. Sci.*, 13: 537-549.
- Wright, M. L., Jorey, S. T., Myers, Y. M., Fieldstad, M. L., Paquette, C. M. and Clark, M. B. 1988. Influence of photoperiod, day-length and feeding schedule on tadpole growth and development. *Dev. Growth, Differ.*, 30(3): 315-323.
- Zangari, F., Cimmaruta, R. and Nascetti, G. 2006. Genetic relationship of the western Mediterranean painted frogs based on allozyme and mitochondrial markers: Revolutionary and taxonomic inferences (Amphibia, Anura, Discoglossidae). *Bio. J. Linn. Soc.*, 87: 515-536.
- Zar, J. A. 1996. *Biostatistical Analyses*. 3rd edn. Prentice Hall, Engle Wood Cliffs, New Jersey, 15-20 pp.

Fisheries:

- 111-118 Effect of pituitary gland (PG) doses on artificial propagation of endangered tarabaim, *Macrognathus aculeatus* (bloch) : S. M. Farid, M. I. Miah, M. A. B. Habib and M. M. Rahman
- 119-127 Development of a low-cost icebox for preservation and transportation of iced fish : A. K. M. Nowsad, M. R. Islam and F. H. Shikha
- 129-137 Effects of inorganic fertilizers on the growth and production performance of exotic carps in polyculture system : K. Z. Hossain, M. J. U. Miah and M. H. Ali
- 139-149 Morphological and genetic variation in three populations of *Hoplobatrachus tigerinus* from Bangladesh : M. Hasan, M. M. R. Khan and M. Sumida
- 151-159 Evaluation of medicinal plants through fish feed against bacterial fish disease : M. Muniruzzaman and M. B. R. Chowdhury
- 161-166 Studies on the gonadosomatic index and fecundity of *Mystus gulio* (Ham.) : M. A. Islam, M. Begum, H. K. Pal and M. J. Alam
- 167-175 Impact of in-pond nursery of shrimp (*Penaeus monodon*) post larvae on the survival rate and production under modified improved culture system : M. L. Islam and M. J. Alam
- 177-186 Survey on the present status of infrastructure and quality management system in Golda farms and depots of selected area : M. N. Haider, M. Faridullah, M. N. Islam and M. Kamal

Agricultural Engineering:

- 187-194 Selection of v-belt for power transmission in agricultural machinery : M. M. Billah, M. S. Hossain, M. R. Islam, M. A. Rahman and M. Mosharraf Hossain

Social Science:

- 195-204 Comparative efficiency analysis of broiler farming under Aftab Bahumukhi Farm Limited supervision and farmers' own management : S. Akhter and M. H. A. Rashid
- 205-215 Impact of rural development scheme of Islami Bank Bangladesh Limited on beneficiaries in Mymensingh sadar area : T. Jinan, A. Bashar, N. Jahan and T. S. Khanam
- 217-228 Production and promotion of triticale as a high quality fodder and feed in small-scale dairy farmers of Bangladesh : M. E. Haque, S. R. Waddington, Z. I. Sarker, N. R. Sarker and M. Akteruzzaman
- 229-241 Impact assessment study on selected spice crops under action plan in Bangladesh : F. A. Huda, M. S. Islam, H. Biswas and M. S. Islam